



A revolution in air quality monitoring

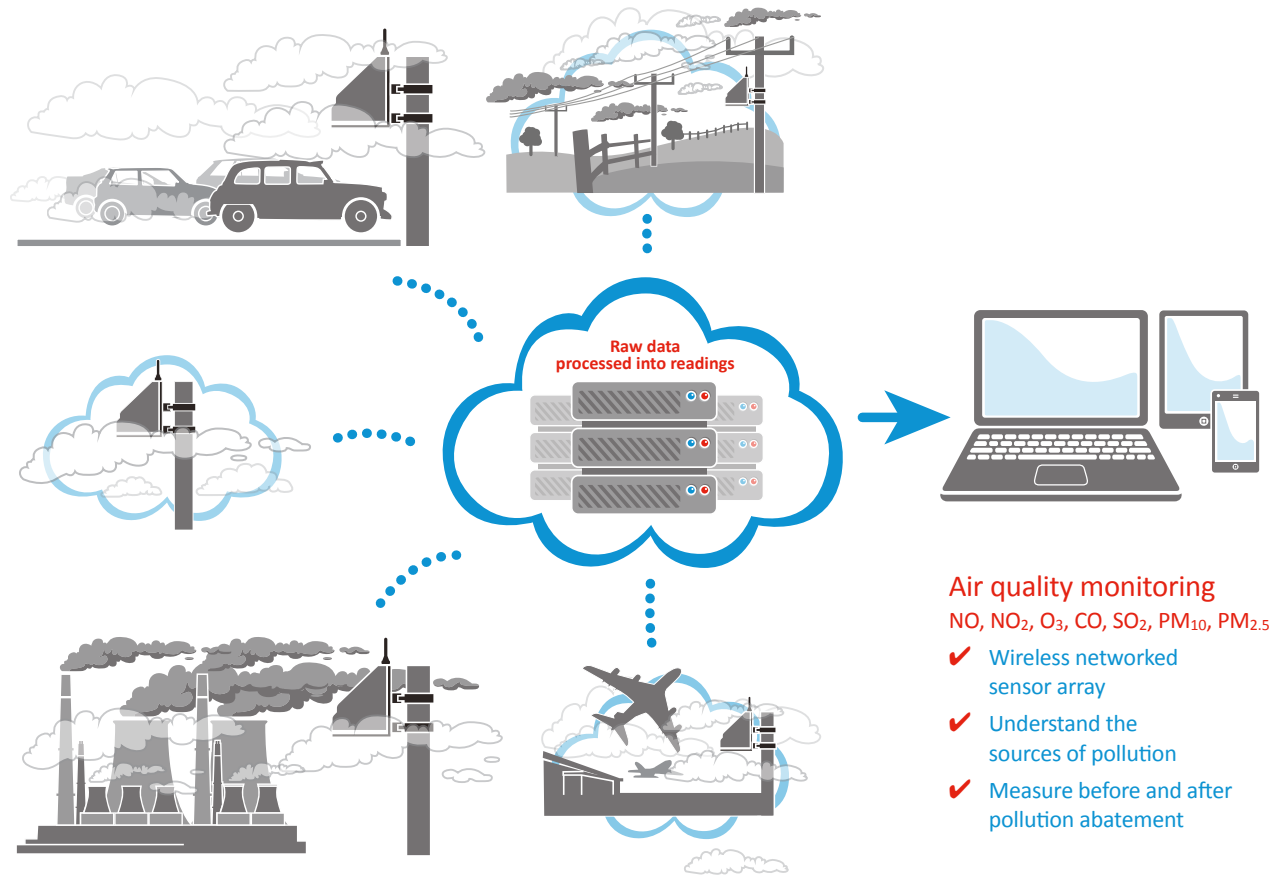
AQMesh is a wireless, battery-powered system for measuring outdoor air quality



AQMesh

Reduces reliance on expensive reference stations, diffusion tubes and modelling

- ✓ Spatial and time resolution in a convenient system
- ✓ A **new** approach to air quality monitoring which allows for a far greater geographical coverage and better spatial resolution
- ✓ Wide range of applications including traffic, compliance and industrial monitoring
- ✓ Proven in worldwide comparison trials
- ✓ Small (20cm), light (2Kg) and completely wireless for easy positioning and moving



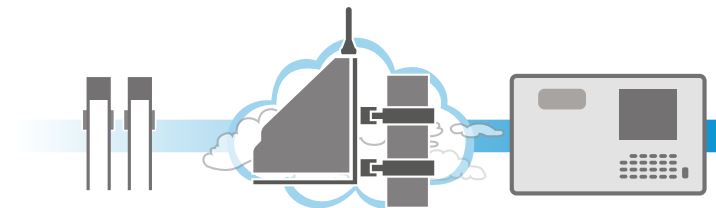
Monitoring at user-set frequencies

AQMesh measures

Nitrogen dioxide (NO ₂)	0–4,000ppb (LDL 10ppb)	* Reading interval (1 – 60 mins)	Transmission interval (30 mins – 60 mins)	Estimated Li battery life
Nitric oxide (NO)	0–4,000ppb (LDL 5ppb)			
Ozone (O ₃)	0–1,800ppb (LDL 5ppb)	1 minute	30 minutes	1 year
Sulphur dioxide (SO ₂)	0–10ppm (LDL 10ppb)	15 minutes	60 minutes	> 2 years
Carbon monoxide (CO)	0–5ppm (LDL 5ppb)	30 minutes	60 minutes	Many years
Total particle count (TPC)	0.5–30µg			
PM ₁₀	0–1,000µg/m ³			
PM _{2.5}	0–500µg/m ³			
Humidity	0–100% RH			
Barometric pressure	500–1,500mb			
Pod temperature	-20 to +100°C			

Operating conditions
Temperature -20°C to +40°C

The risk of sensor failure due to high humidity is greater during extended periods of relative humidity greater than 85%. Sensor replacement can be covered by an annual insurance plan.



£ ££ ££££

Lower cost than reference equipment, better time resolution than diffusion tubes

Weighing in at less than 2kg and measuring 20cm wide, AQMesh is easy to install and use

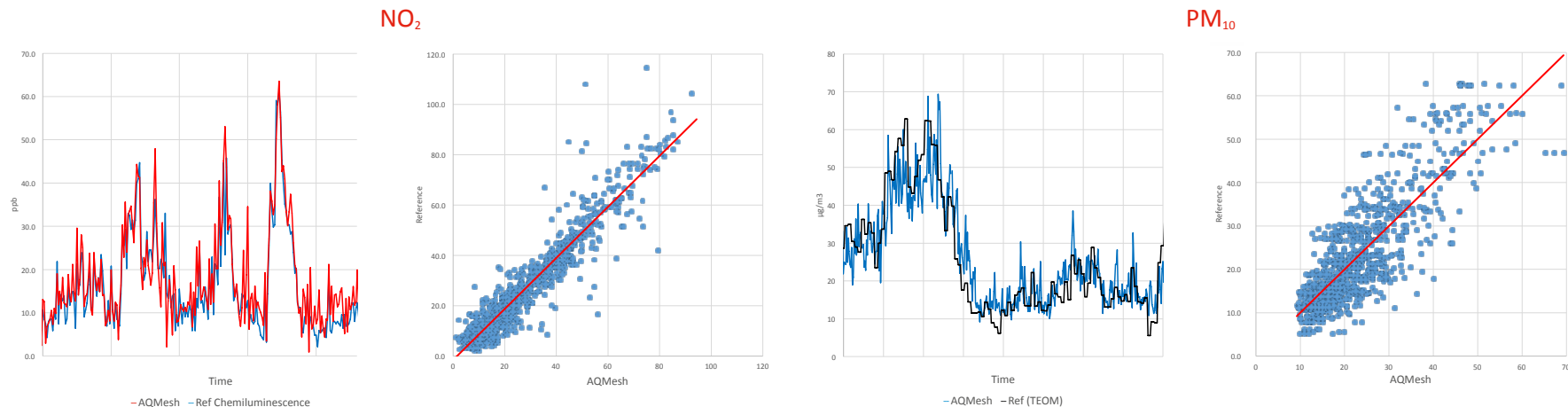
- ✓ Flexible power options including lithium battery giving 2 years life (refer to table)*
- ✓ No need for mains power or wired communications
- ✓ AQMesh can be attached to lampposts, fence posts, signposts and walls
- ✓ Built-in wireless mobile GPRS technology means that data can be accessed at any time from any location
- ✓ 10 minutes to install (see video on AQMesh.com)
- ✓ Online correction for environmental factors and cross-gas effects

Once stored on AQMesh's server, the user has access to:

- ✓ Corrected ppb readings
- ✓ Reading and data transmission interval settings
- ✓ Diagnosis and maintenance information
- ✓ Full online data access
- ✓ Data visualisation
- ✓ Data download options
- ✓ Data security management



Compares well with reference equipment





AQMesh pods are sold with an essential data contract which covers:

- ✓ Data transmission
- ✓ Data processing
- ✓ Data access and download
- ✓ Secure data storage and access
- ✓ Pod/project management tools
- ✓ System maintenance, diagnosis and support



The manufacturer reserves the right to vary AQMesh specification without notice – current specification should be checked before purchase.

For further information visit www.aqmesh.com or email info@aqmesh.com